



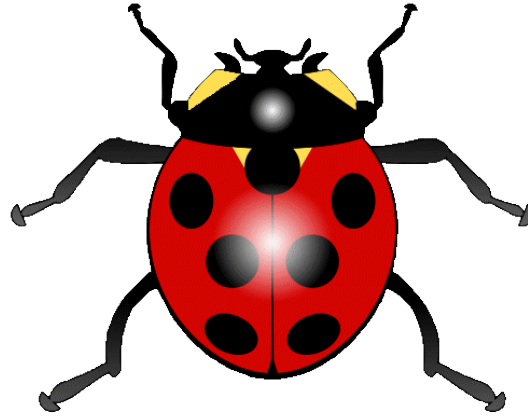
shutterstock.com • 530040967

Social Bees vs. Solitary Bees
Over 20,000 kinds of bees

Bee Facts

- There are 4,000 bee species in the United States
- There are 600 bee species in WA
- There are 18 species of bumble bees in SE Washington

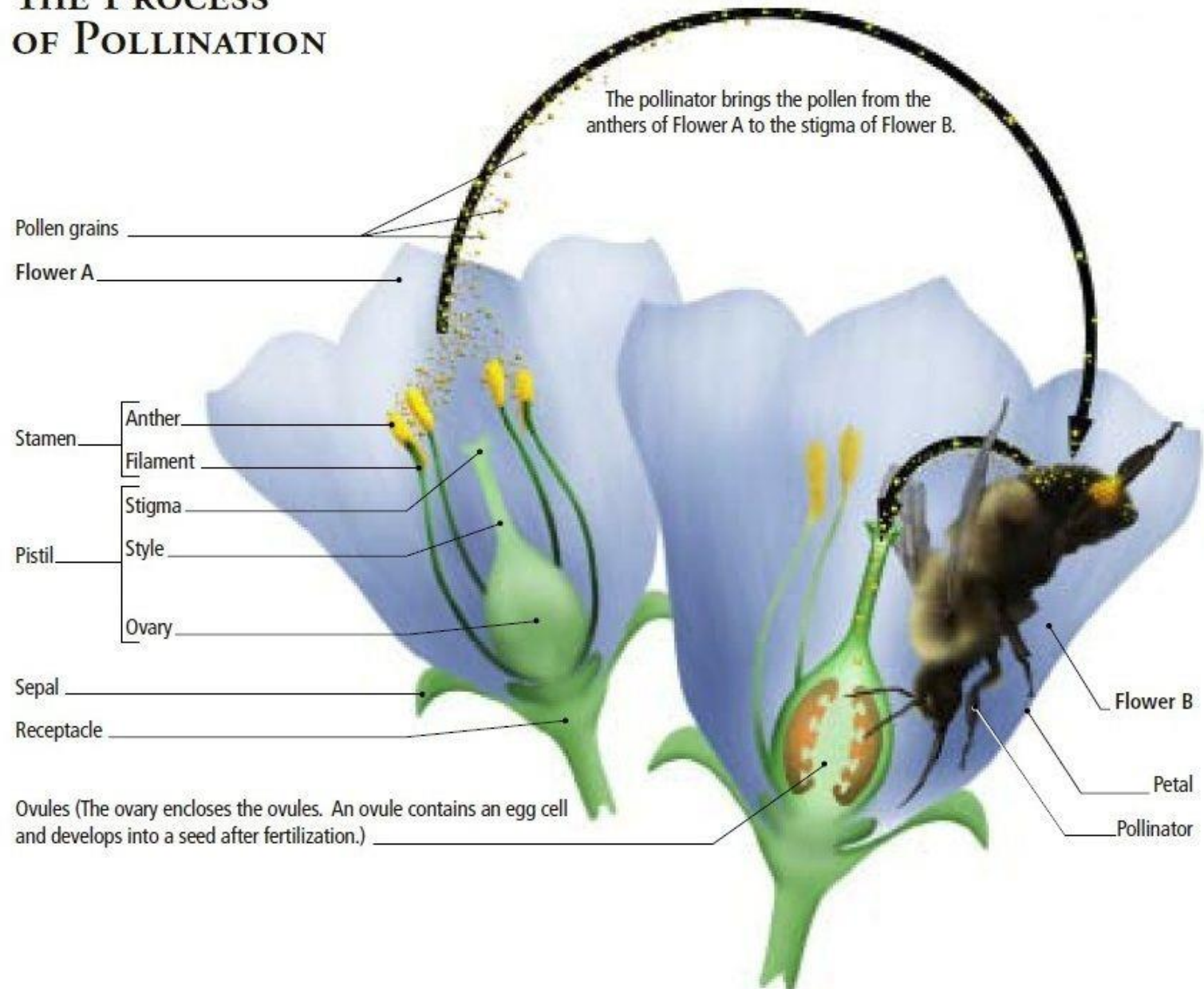




Bees Are Insects

- 6 legs
- 3 body parts
- Usually have wings
- One pair of antennae

THE PROCESS OF POLLINATION





Social Bees

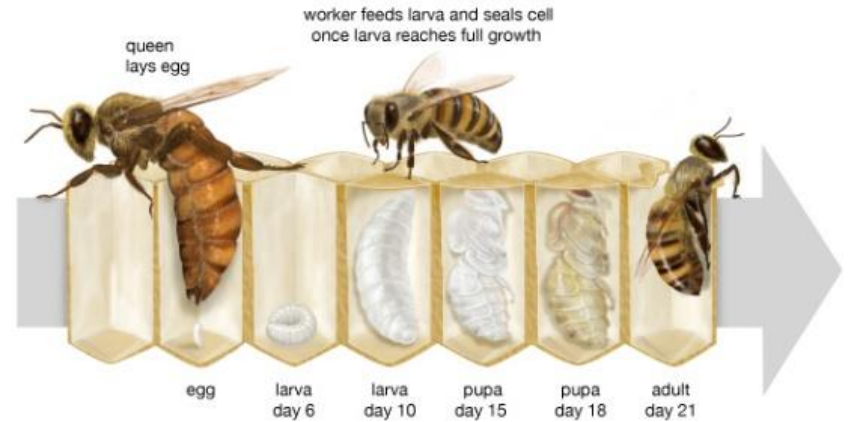


Solitary Bees – 80%

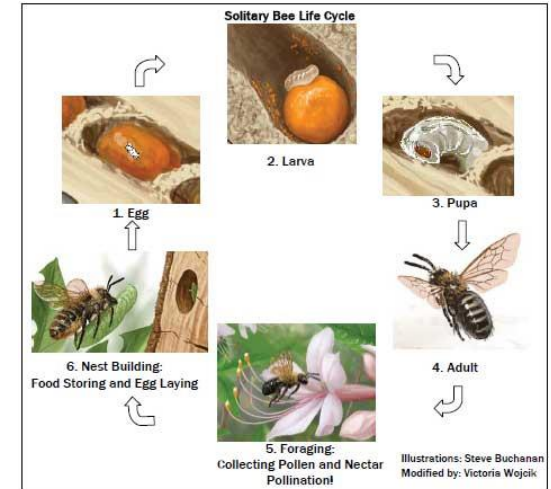
Honey Bees – social or solitary?



Life cycle of honeybees



© 2013 Encyclopædia Britannica, Inc.



Mason Bee – Social or Solitary?

Social Bee – Honey Bee	Solitary Bee – Mason, Leaf cutter, Sweat Bees
One queen – one hive. Worker bees defend the hive, the queen and the young	Every female is the queen; no hive
Hive communicates and every bee has a specific task:	No communications since no one works for the female. She does all chores herself.
More aggressive and protective of the hive	Gentle
More potent sting with stronger reaction	Rarely stings unless being squished, then the sting is like a mosquito bite
Make honey	None available for harvest
Effective pollinator. One bee gathers pollen and another gathers nectar	Efficient pollinator. Pollen and nectar are gathered in the same visit
It is easier to catch diseases from other animals if living in a group	Living alone, they are less likely to spread disease to other mason bees



Changes in Bee Habitat



- Loss of food/native flowers in their habitat
- More chemicals in their environment
- Increasing temperatures
- Loss of shelter/natural space and materials in their habitat

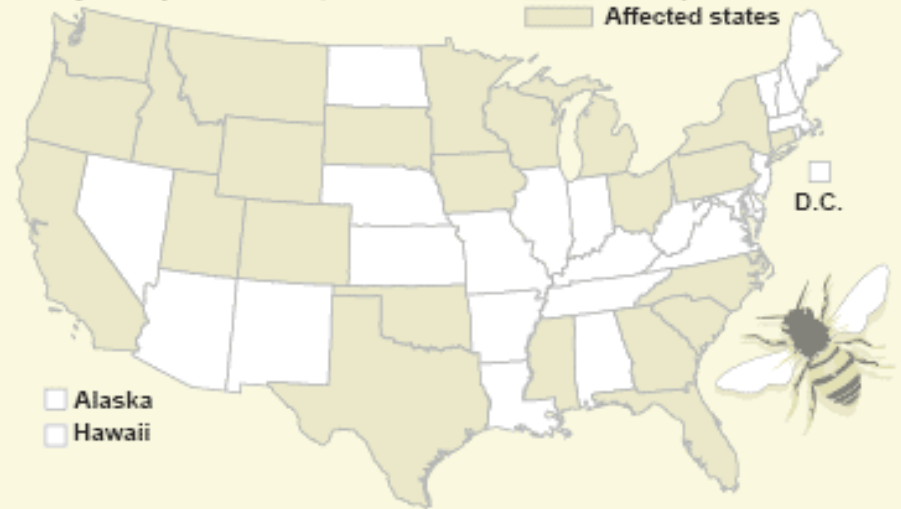
Why are solitary bees declining?

Honeybee colonies dying out

Bee colonies have been dying rapidly and in large numbers across the nation. The cause is unknown.

Colony Collapse Disorder, Feb. 2007

□ Non-reported states
■ Affected states



SOURCE: United States Department of Agriculture

AP

Discussion

- Why are bees important to us?
- What are the advantages of being a social bee? Why would honeybees rather live in a colony?
- What are the advantages of being a solitary bee?
- What do mason bees need to live?
- Are there ideas about how to help solve the problem of decreased bee populations?
- How can we support the solitary bees in our garden?



How can we help
Mason Bees?
